

**CERTIFIED LAND CORNER RECORDATION**

DESCRIPTION OF CORNER EVIDENCE FOUND, AND ORIGINAL RECORD (If known)

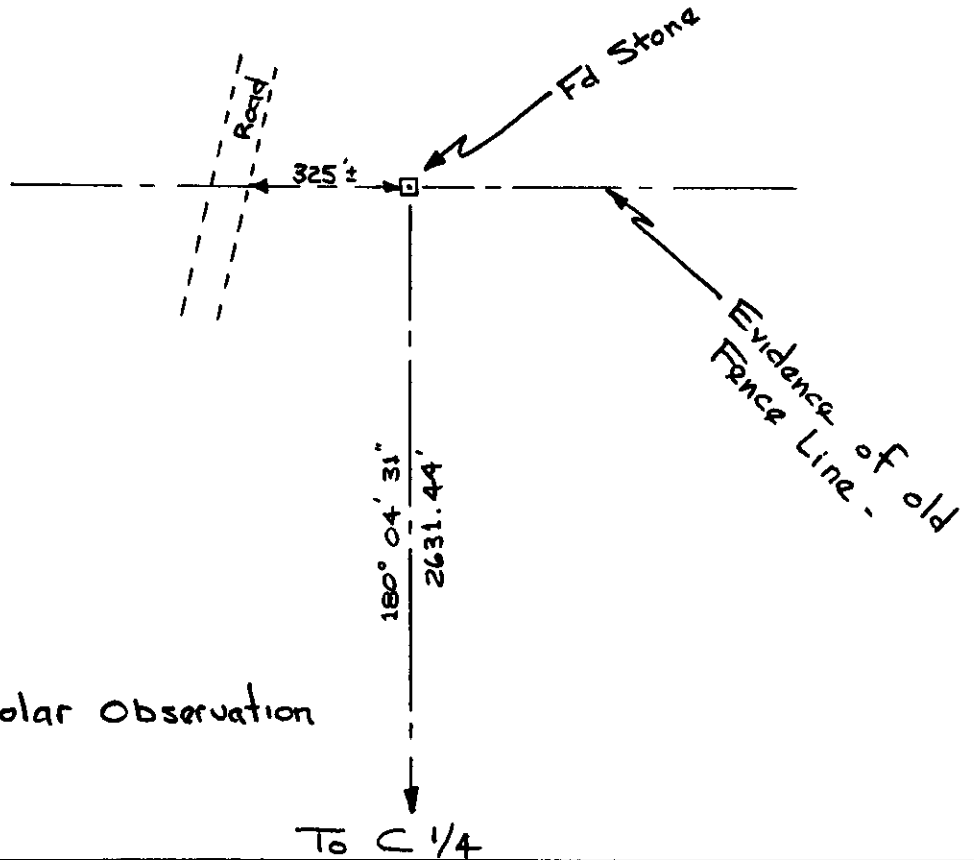
N 1/4  
 Sec 9  
 T. 14 N., R. 65 W.

Fd orangeish granite stone  
 7" x 10" x 6" exposed  
 1/4 chiseled on South Face

DESCRIPTION OF MONUMENT AND ACCESSORIES ESTABLISHED  
 TO PERPETUATE THE ORIGINAL LOCATION OF THIS CORNER:

Chiseled "x" on top of Stone

SKETCH, WITH COURSE AND DISTANCE TO ADJACENT CORNER IF DETERMINED IN THIS SURVEY.  
 (May Sketch or Paste Reproduction on Reverse Side.)



NOTE: Azimuths by Solar Observation

I, WILLIAM D. BRAMAN certify that I have carefully performed or reviewed the work done on the diagrammed corner as reported on this recordation form and approve the same.

William D. Braman      45 566  
 Signature of Surveyor      Registration No.

STATE OF WYOMING,  
 Office of Clerk and Recorder,  
 County of Laramie

594114

This "corner record" was filed for record on the 23 day of October, 1965, was noted on the cross-index plat and is assigned page No. \_\_\_\_\_, in book No. \_\_\_\_\_.

James C. Whitehead  
 County Official

Cross Index No. _____	T. _____	R. _____	Mer. _____
_____	T. <u>E 11</u>	R. <u>14</u>	Mer. <u>65</u>
_____	T. _____	R. _____	Mer. _____
_____	T. _____	R. _____	Mer. _____
_____	T. _____	R. _____	Mer. _____
_____	T. _____	R. _____	Mer. _____
_____	T. _____	R. _____	Mer. _____

504414

Photographed  
Indexed  
Filed  
Assessor